

Exporting Honey to the UK: A Step-by-step Guide

The care that is poured into every jar of honey is uniquely New Zealand. The exporting journey begins with the growth of beautiful blossoms and ends with the UK consumer enjoying the sweet scent of delicious honey.

Purpose of this Guide

This step-by-step guide has been developed in collaboration with NZ honey exporters to help you navigate the journey and take full advantage of opportunities created by the NZ-UK Free Trade Agreement (FTA).

Benefits for Exporters

The NZ-UK FTA entered into force in May 2023 and provides a huge opportunity for NZ honey producers and exporters to be competitive in the UK market, e.g.

1. 16% tariff on honey immediately removed
2. Self-declare country of origin
3. Helps reduce barriers to trade

*Kia ora, I'm Maia,
a honey exporter.
Join me as I take you on
the journey of crafting
and exporting
Aotearoa's finest honey
to be enjoyed in the UK.*



[Click here to
Get Started](#)

Click these buttons in the guide for more

- Information
- Platforms
- Help



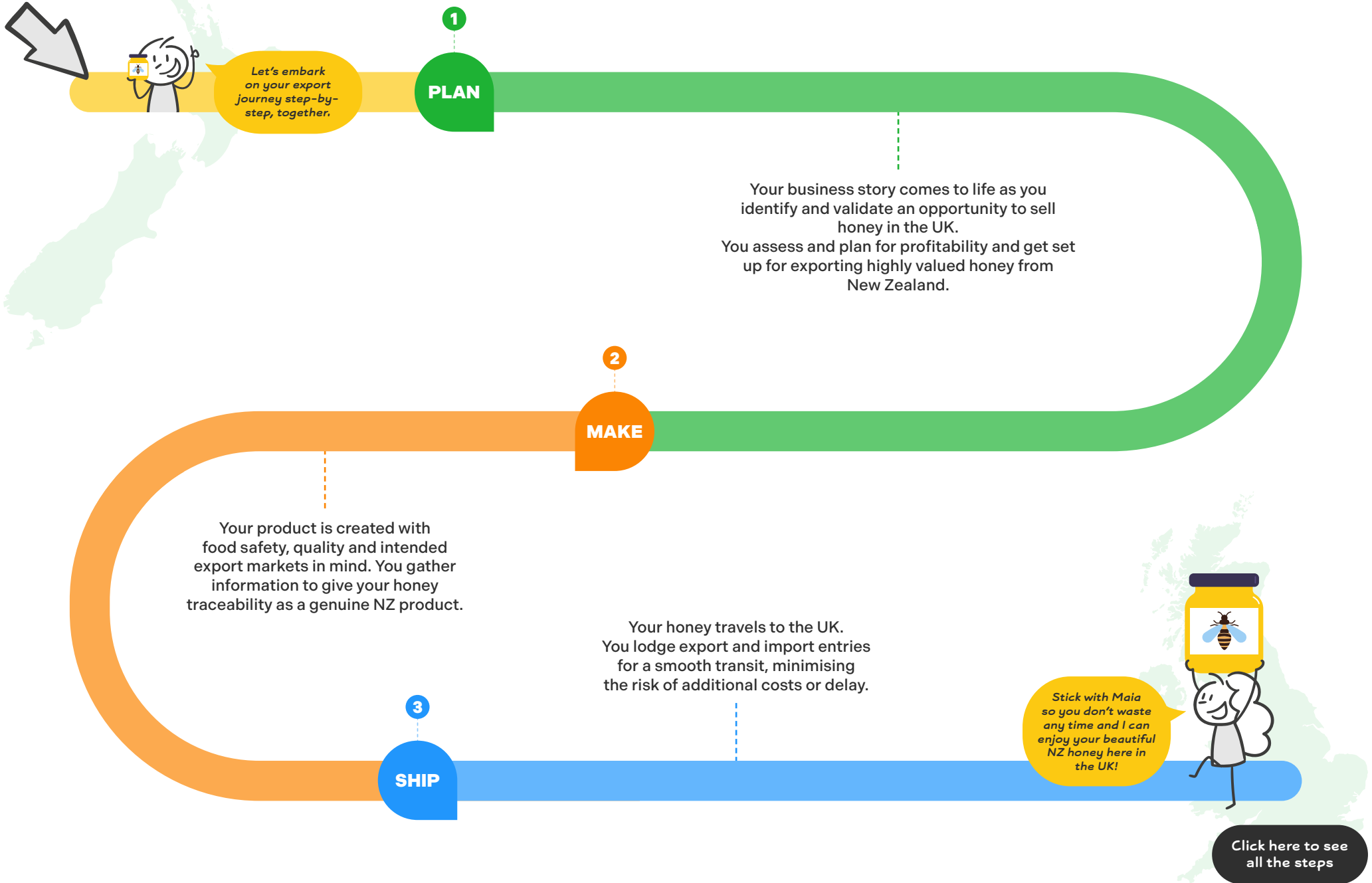
NEW ZEALAND
CUSTOMS SERVICE
TE MANA ĀRAI O AOTEAROA



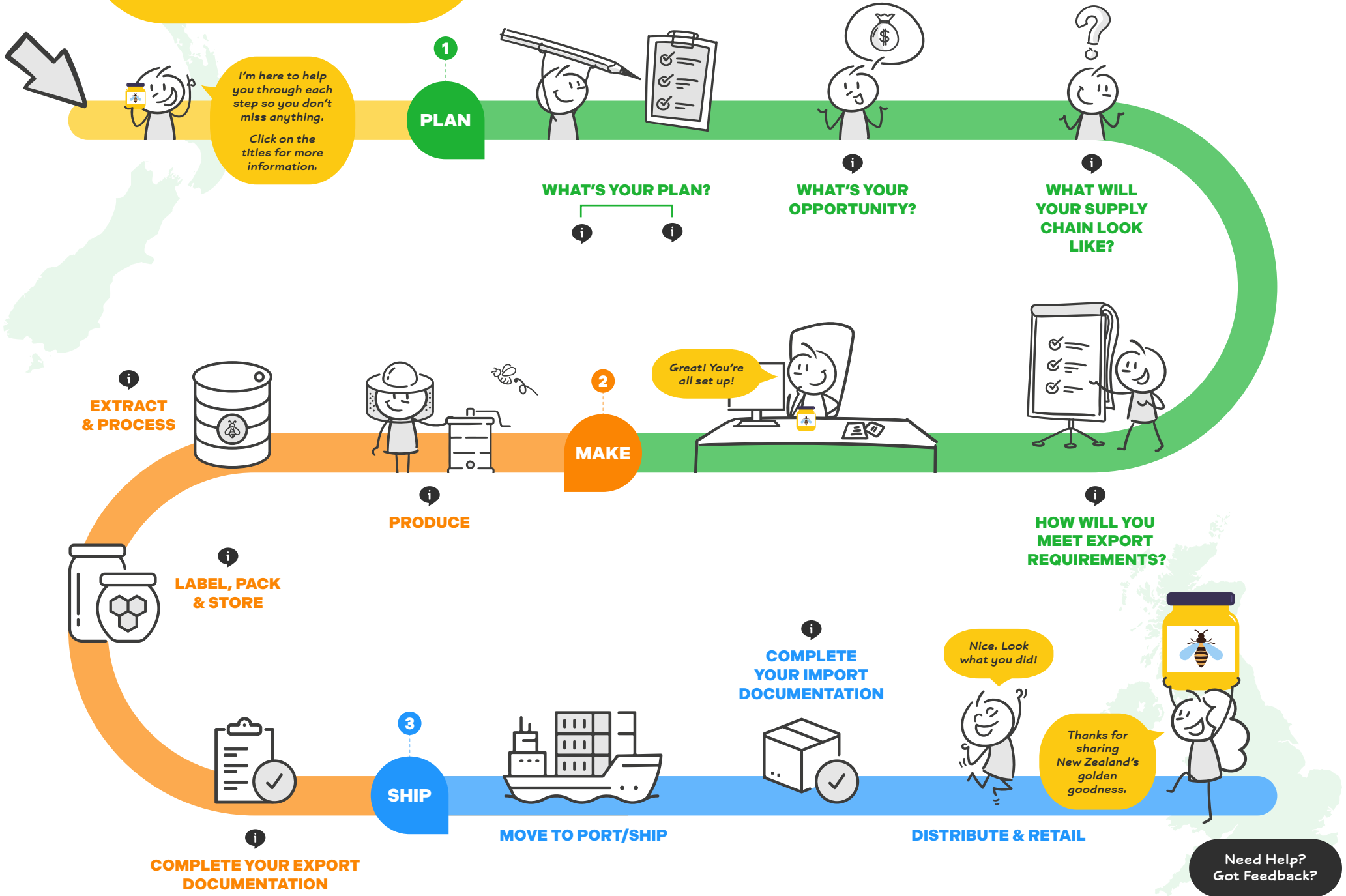
Ministry for Primary Industries
Manatū Ahu Matua



Export Journey Overview



Export Journey Step-by-step



WHAT WILL YOUR SUPPLY CHAIN LOOK LIKE?

Considerations for creating a trusted supply chain to get your product from NZ to the UK safely

Who is involved in making your honey?

Beekeepers



Extract & Process Operations



Labelling & Packing



Storage Facilities



Who delivers your logistics?



Transport: Land, air, sea

Shipping Packer (shared or full container)

Freight Forwarder/Logistics Manager

Who completes your export / import?



Exporter

Customs Broker (usually on behalf of exporter)



Importer

Customer, Distributor/Retailer



Click these buttons for more

- Information
- Platforms
- Help



Top Tips:

Use the NZ-UK FTA to strengthen your negotiations thanks to the 16% tariff saving.

Understand your international commercial terms (Incoterms).



HOW WILL YOU MEET EXPORT REQUIREMENTS?

Actions required to ensure your supply chain is set up to meet requirements for UK export

Honey production and logistics providers meet NZ and UK requirements



Meet New Zealand requirements

Check destination requirements

Register as an Exporter

Register for Animal Products E-Cert system

Conduct a simulated product recall



Set up to lodge export entry



Either a Customs broker (on behalf of the exporter) or the exporter if registered with NZ Customs to access Trade Single Window.



Click these buttons for more

- Information
- Platforms
- Help



Top Tip:

Apply for 'advance rulings' for certainty of HS codes (Harmonised system).



COMPLETE YOUR EXPORT DOCUMENTATION

Actions required to provide information for each NZ export consignment

Apply for AP E-Cert

Before the day of departure



Complete Export Entry for NZ Customs

Export entry is completed in Trade Single Window (TSW)



Click these buttons for more

- Information
- Platforms
- Help



Top Tip!

Subscribe to MPI notifications and stay up to date with requirements.



COMPLETE YOUR IMPORT DOCUMENTATION

Actions required to provide UK import information for each consignment

Benefit from the NZ-UK FTA, claim 0% tariff (a 16% tariff saving)

Send Origin Declaration to Importer



Complete UK Requirements

Send export certificate from AP E-cert to relevant party, e.g. the importer



Importer completes Import Entry

If refused entry on arrival



Notify MPI within 48 hours

Resolve export non-conformance (ENC)



Click these buttons for more

- Information
- Platforms
- Help



Top Tip!

NZ-UK FTA has working groups to help solve barriers to trade. Please let us know any issues you may be facing.





Need help? Get in touch

Exporter helpline: 0800 824 605

Email: exports@mfat.govt.nz



Register a Trade Barrier



Help us improve this guide

[Go back to
Export Journey](#)